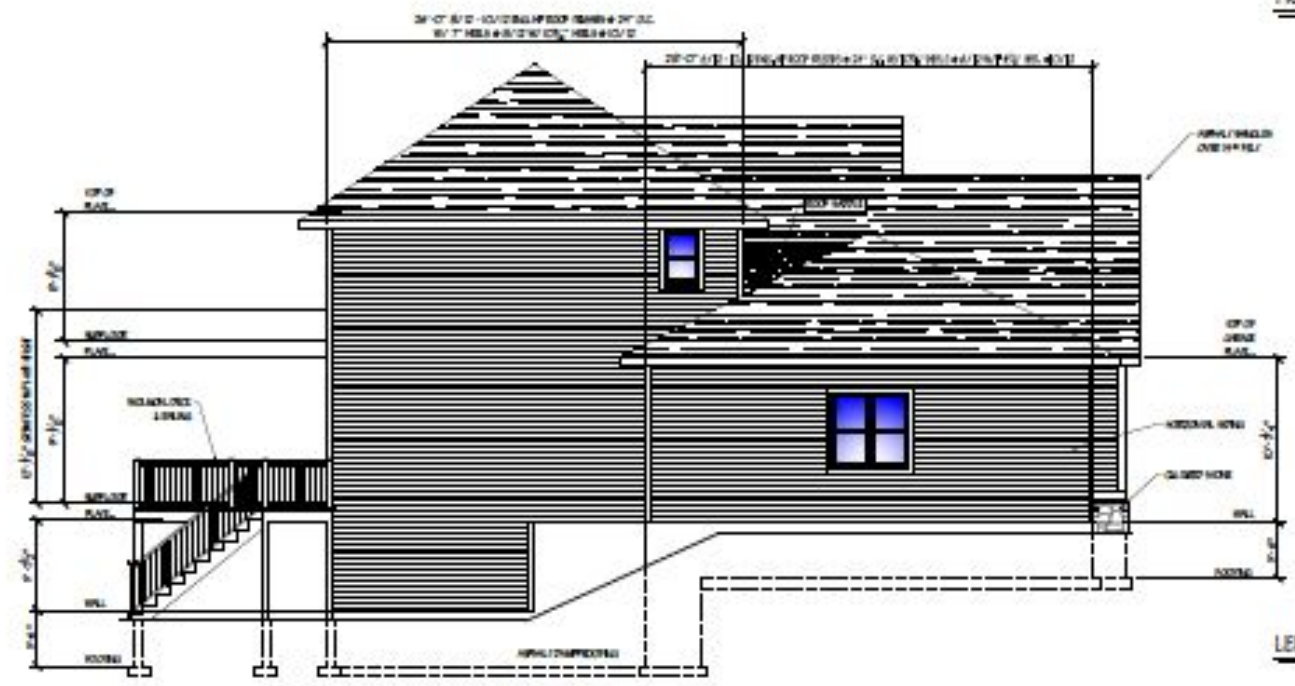




FRONT ELEVATION

1/4" = 1'-0"



LEFT ELEVATION

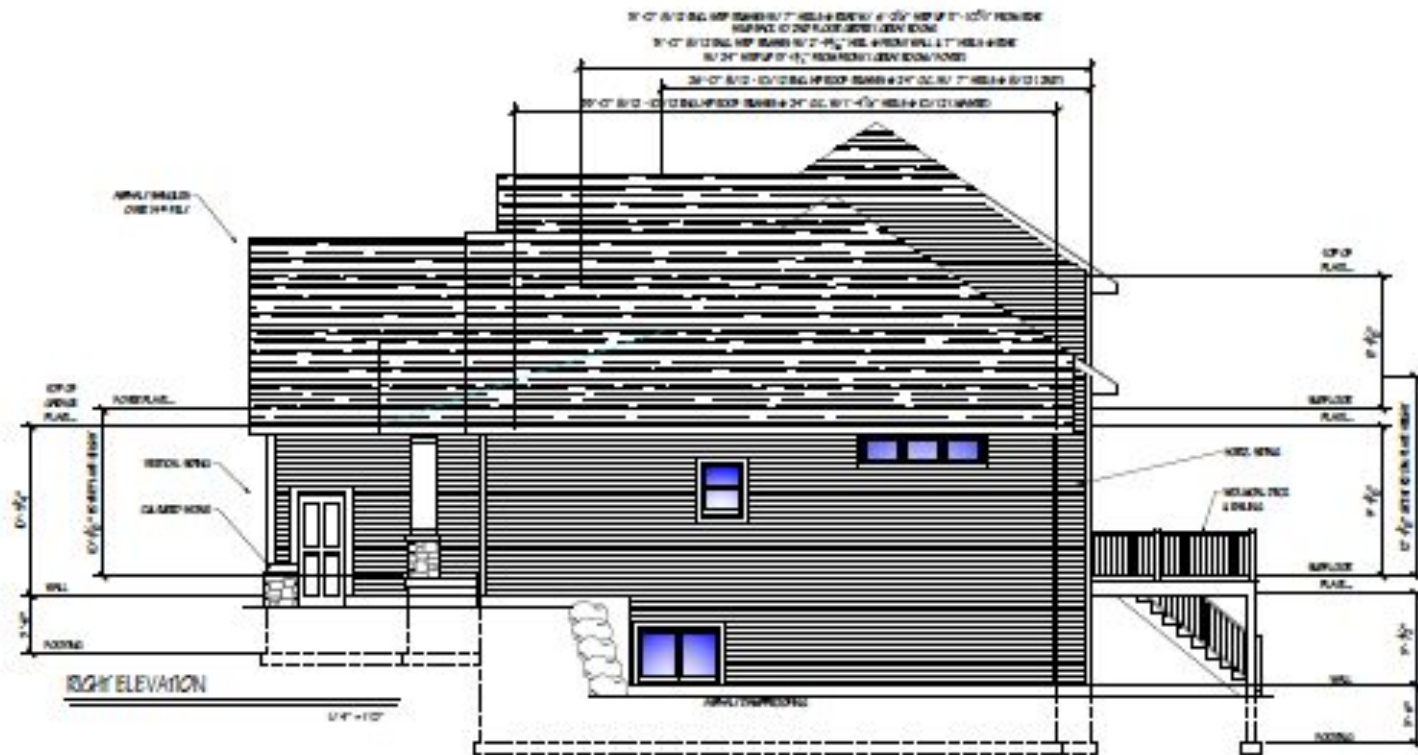
1/4" = 1'-0"

12



REAR ELEVATION

1/4" = 1'-0"

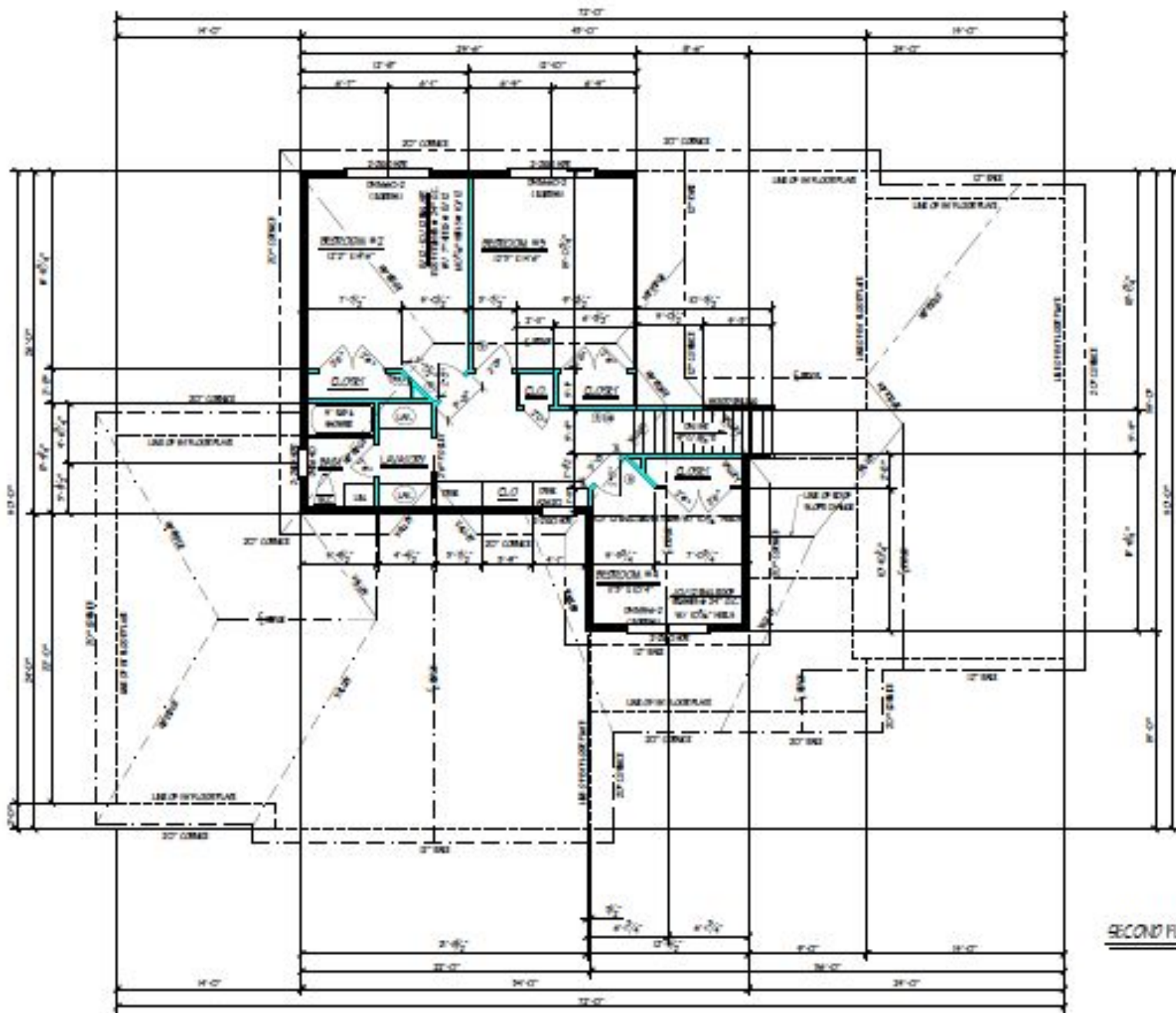


RIGHT ELEVATION

1/4" = 1'-0"

NOTES

- 1) 1/2" PLATE GIRD
- 2) -WALL SECTION - INDICATED BY DASHED LINE
- 3) -CORNER INDICATED BY "C"
- ALL DIMENSIONS SHOWN SHALL BE TO CENTERLINE UNLESS OTHERWISE NOTED
- INDOOR AIR SUPPLY LEAVES SHALL BE 12" ABOVE FINISH CEILING AND 24" BELOW FINISH FLOOR SHALL BE SUPPLIED AND RETURN SPRING AIRWAYS SHALL BE APPROVED BY THE INSPECTOR



SECOND FLOOR PLAN
1/4" = 1'-0"